

EXPANDED METAL  
MANUFACTURING CO.



**INDUSTRIAL RACKING**

**&**

**STORAGE SOLUTIONS**



**70000**  
m<sup>2</sup> area furnished yearly

employees

**150+ 30**  
years  
in the market

**3000+**  
products  
available in 3 countries

**18**  
production  
lines

**3**  
points  
of sale



## TABLE OF CONTENTS

1. Material Specification .....	2
2. Industrial Racking .....	3
Light Duty	
Medium Duty	
Heavy Duty	
3. Mezzanine Shelves .....	7
4. Smart Choice Storage Shelves .....	8
5. Retail / Display Shelves .....	9
6. Stainless Steel General Purpose Shelves .....	11
7. General Purpose Shelves .....	12
Bolted Connection	
Boltless Connection	
8. Mobile Shelves / Cabinets .....	15
9. Steel Lockers / Private (Personal) Cabinets .....	17
10. Agricultural Racking System .....	18
11. Other Types .....	19
Decorative Shelves	
Shoes Display Shelves	
Cantilever Storage	
Tire Storage and Display Shelves	



## ABOUT US

EXMET (Expanded Metal Manufacturing Company) was established in 1992 in the State of Qatar. It is owned by Mr. Mohammed Al-Jaber and partners with a paid capital of 6 Million Qatari Riyals. Factory and main office located at the Doha New Industrial Area with approximate area of 13,000 sqm.

EXMET started to manufacture plastering and block accessories since 1992 as the first manufacturer in Qatar and third manufacturer in the whole Arabian Gulf area. By the year 2003, it has extended the scope of business to include gypsum drywall accessories, steel lintels, cable management system and cladding fixing systems. Later on, EXMET expanded to Oman and Kuwait. To adapt the diverse demands of the market, several machines were acquired and some products were added (Chain Link Fence, Industrial Shelving and Racking System, Tile Movement Joint and Expansion Joint System).

With our profound knowledge of several manufacturing techniques, skillful and talented team of individuals and state of the art machinery, we take pride in having our own dedicated design team in developing storage solutions.

We cater to industries like ours: manufacturing industry, warehouse and logistics industry, also retail industry, or even as less demanding as construction site storage.

# MATERIAL SPECIFICATIONS

## MATERIAL SPECIFICATIONS

### PRE-GALVANIZED STEEL (HOT DIP GALVANIZED STEEL SHEET)

ASTM A 653 - Standard Specification for Steel Sheet, Zinc-coated (Galvanized) or Zinc-Iron Alloy-Coated (Galvannealed) by the Hot-Dip Process

BS EN 10346 - Continuously Hot-Dip Coated Steel Flat Products

### WELDING

Welding procedures used in fabrication of racking system are matching with the requirements of American Welding Society Standards (AWS D.1.3) to ensure smooth, clean and strong welding.

### POWDER COATING

BS EN 13438 - Paints and Varnishes - Powder Organic Coating (formerly BS 6497: 1984)

CONTENTS	SPECIFICATION
Base Metal	Cold-Rolled, Galvanized Steel Stainless Steel and Aluminum
Paint Systems	Primers: Epoxy, Polyester Top Coat: Regular Modified Polyester (RMP), Silicon Modified Polymer (SMP), Super Durable Polyester (SDP), Poly Vinylidene Flouride (PVDF), Polyurethane, Acrylics, Plastisol, Metallics
Colors	As per RAL shades / Customer Requirements
Coating Thickness	80 - 120 microns

RAL 5005

RAL2009

RAL 2003

RAL 7040

RAL 9010

# INDUSTRIAL RACKING

## أنظمة التخزين الصناعية

Industrial Shelving System known as Heavy Duty Shelves is used for storage of heavy and medium storage requirements, it can be Pallet Racking System and Drive-In Racking System. The in-house design team ensures customer satisfaction where we can work hand in hand with our customers in finding safe and cost effective warehouse solutions.

### VERSATILE AND FLEXIBLE

This storage solution is applicable for high bay warehouses; wide or narrow aisle storage areas.

The slotted upright frames allows for adjustability of beams to any vertical level adjustment. It can be easily removed and repositioned, whenever and wherever necessary.

### SPACE MAXIMIZATION

The system allows for high density storage. It allows for deep racking which allows greater space utilization whilst taking into consideration accessibility of the stored goods.

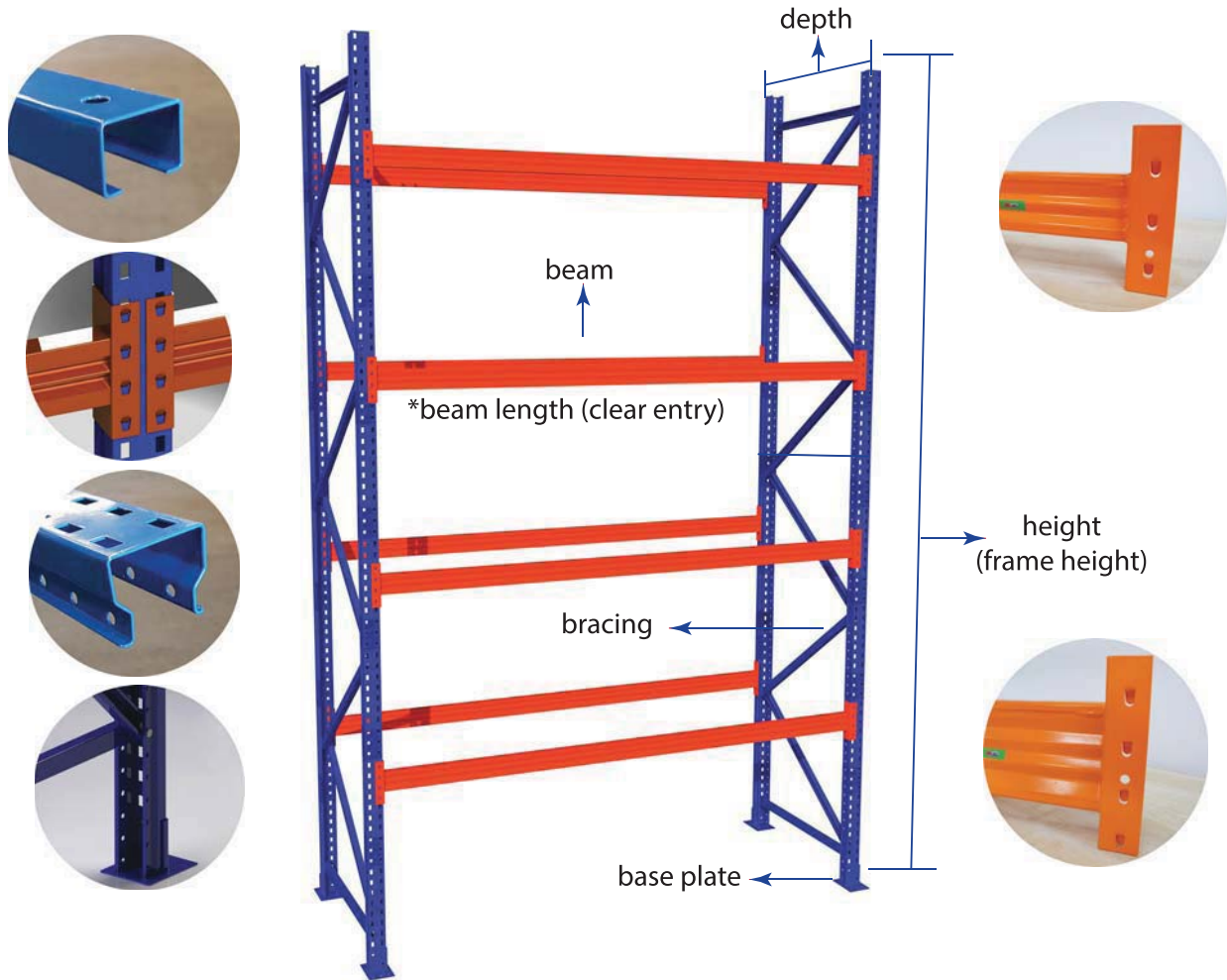
The adjustable beams allows for four tiers or up to five tiers of storage, depending on the load level.



### ADVANTAGES:

- space efficient; utilizes the height of the building
- It accommodates a wide range of product storage
- adaptable to any load type weight and volume
- highly stable

# INDUSTRIAL RACKING

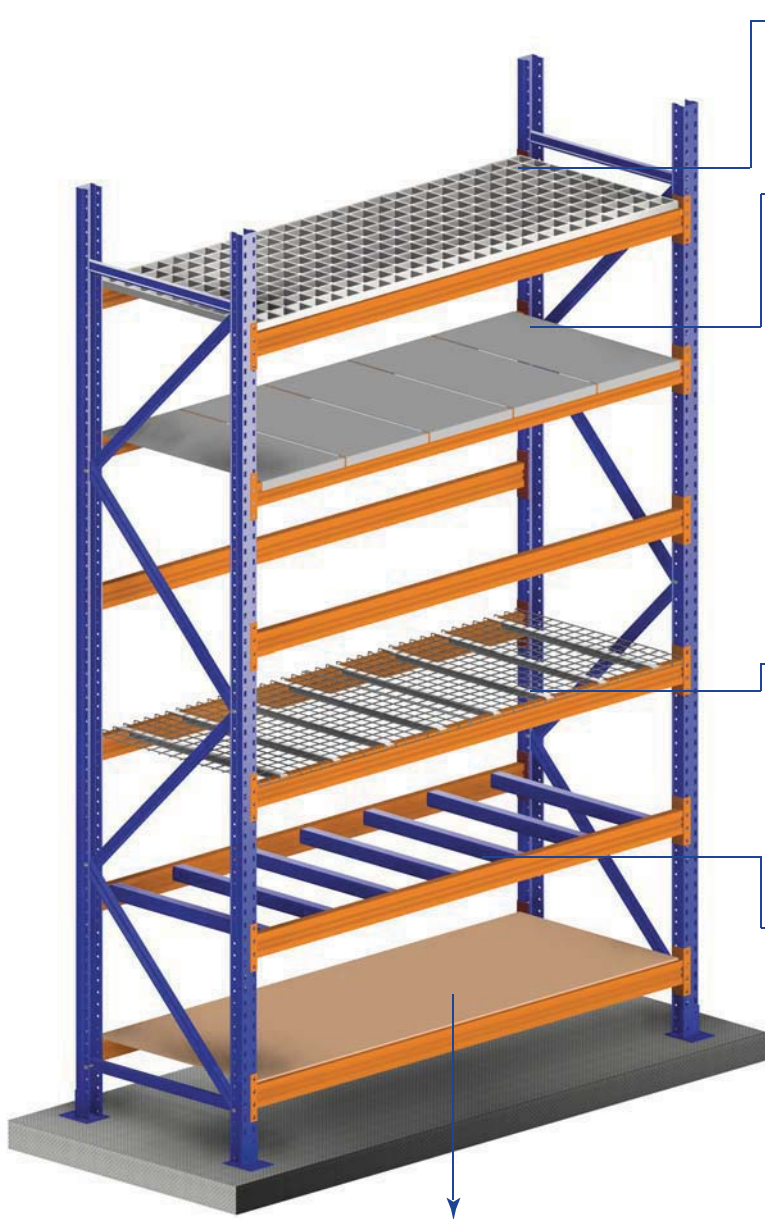


	Framing Details	Load Capacity* (kg)		Depth (mm)	Length (mm)	Height
		Frame Load	Level Load			
Light Duty	Frame A	Up to 5000	Up to 1200	900**	2700	Up to 5 meters
	Beam A					
Medium Duty	Frame B	Up to 6000	Up to 1600	900**	2700	Up to 5 meters
	Beam B					
Heavy Duty	Frame C	Up to 7500	Up to 2000	900**	2700	Up to 8 meters
	Beam C					
EXTRA HEAVY DUTY	For load capacity up to 2500 kg		Please contact our Sales Representative or EXMET Technical Team			

\* Note: Loads on the shelves shall be equally distributed  
 \*\* other sizes can be arranged

# INDUSTRIAL RACKING

## SHELF TYPE



### Metal Grating Shelf

### Steel Decking Panels

- the most common type of shelf; used in most shops of storage applications

- used for heavier loads especially for industrial use: manufacturing, workshops

**\*powder coated steel is available**

### Wire Mesh Shelf

- bars used are smaller compared to Mesh Grating Shelf

- easy installation and doesn't collect dust and dirt easily compared to other shelves

### Pallet Support Bars

- channels manufactured to suit assembly on the beam to support the pallets during storage

### Plywood Decking with V - Reinforcement Profile

- shelves used for lightweight storage



## INDUSTRIAL RACKING

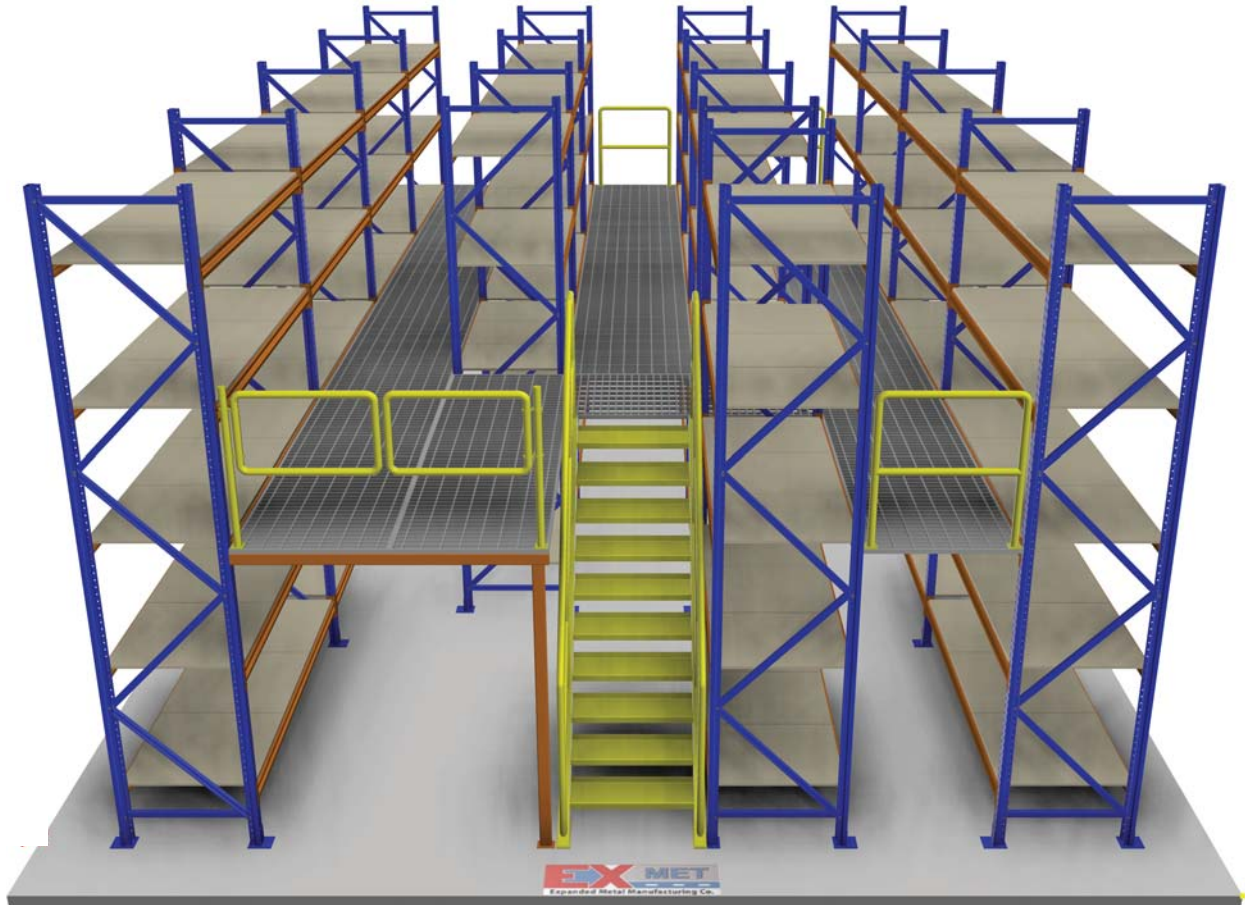


Drive In Pallet Racking  
Suitable for similar materials storage



Logistics and Warehouse (Pallet Racking)

## MEZZANINE SHELVES نظام التخزين مع ميزانين



### Features:

- Uses standard industrial shelving components which acts as a support structure.
- Maximize the space and storage capacity of the total warehouse area
- More cost effective because of the efficient usage of the existing overhead space.
- Many options are available depending on the application and location.

## SMART CHOICE STORAGE SHELVES

نظام التخزين الأمثل الإختيار الذكي



SMART storage shelves is an EXMET design solution which is focused on heavier load requirements whilst taking into consideration economic advantage.

The load capacity can cater up to 700 kg / rack. This is suitable for workshops, stores, warehouses and many other areas.

	*Loading Capacity	Depth	Width	Height
Type A	500 kg / level	500 / 600 / 700	1.5 mtr	Up to 3.0 mtr
Type B	380 kg / level	500 / 600 / 700	2 mtr	Up to 3.0 mtr

\* Special requirement up to 700kg can be arranged, please consult our technical team

## SUPERMARKET (GONDOLA) SHELVES

This type of storage racks have several functions. It is suitable for any type of business. These shelving systems are used in bookstores (for both storage and display), supermarkets and retail shops.

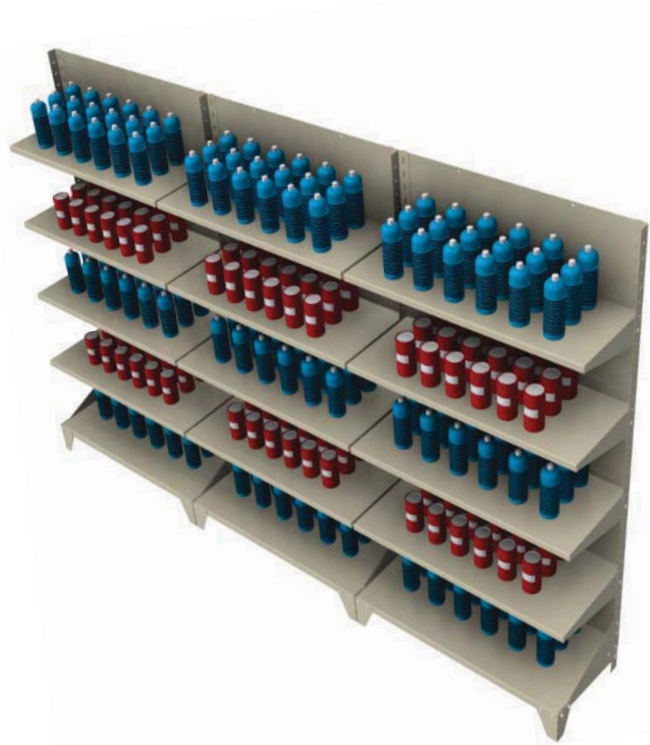


	*Loading Capacity	Depth (mm)	Height (mm)
MLL (Light Load)	85 kg	400 / 500	Up to 3mtr
MLM (Medium Load)	125 kg	400 / 500	Up to 3mtr

\* Special requirement up to 200kg can be arranged, please consult our technical team

AREAS OF USE:

- Display shelves for supermarkets / garments / building materials



- Display Shelves for Bookstore:

Used in bookstores to showcase wide range of books available in the stores. Available in single side display or double side display.



Type A



Type B

## GENERAL PURPOSE STAINLESS STEEL SHELVES

الرفوف المقاومة للصدأ

### AREAS OF USE:

Used in places where there is hygienic requirements. Widely used in hospitals, clinics, hotels and food storage.



# GENERAL PURPOSE SHELVES

الرفوف العملية لكافة الاستخدامات



## 1. BOLTED CONNECTION

These type of shelves can be used in storing light objects such as spare parts, shoes, carton boxes. Typically used in houses, offices or small stores.

### ADVANTAGES

- easy installation and assembly
- cost saving
- flexible; shelves are adjustable according to the users preference
- can be used in any locations

<b>Loading Capacity</b>	65 kg / level	125 kg / level
<b>Depth</b>	300 – 400 mm	
<b>Width</b>	800 - 1000 mm	
• All other sizes can be arranged according to requirements		



## 2. BOLTLESS CONNECTION

These type of shelves can be used in storing light objects such as spare parts, shoes, carton boxes. Typically used in houses, offices or small stores.

### ADVANTAGES

- easy installation and assembly
- cost saving
- flexible; shelves are adjustable according to the users preference
- can be used in any locations

<b>Loading Capacity</b>	65 kg / level	85 kg / level
<b>Depth</b>	300 – 400 mm	
<b>Width</b>	900 - 1000 mm	
	<ul style="list-style-type: none"> <li>• All other sizes can be arranged according to requirements</li> </ul>	





**EXMET HAS**

**COMPLETE SOLUTIONS**

***FOR YOUR NEEDS***



## MOBILE CABINETS

### الخزائن المتحركة

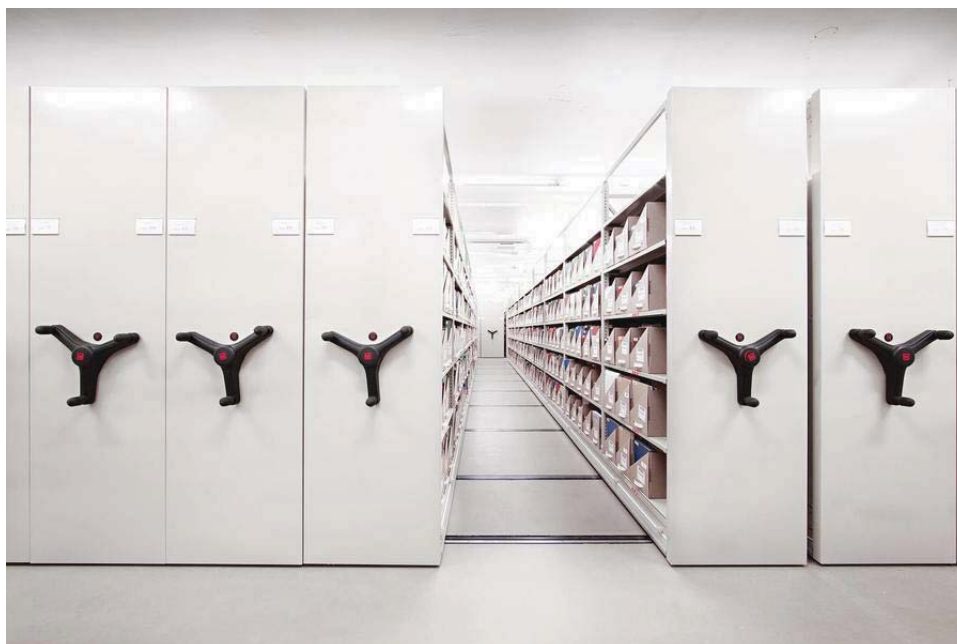
#### **EXMET Mobile Cabinets**

is a highly flexible, cost effective solution. Efficient movement with a simple handle either manual or mechanical. Mobile cabinets contain the highest quality components, setting a new industry benchmark for strength and durability. Finishing can be epoxy powder coating to any color or can be cladded by any required type of rigid wood.

Areas of usage : Banks, Large Companies, Hospitals



MANUAL



MECHANICAL



## More than 40% extra space

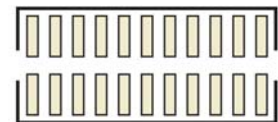
A mobile cabinet system offers other advantages besides extra space. Your employees need less time to tidy up or to search for storage items. In a mobile system, your storage items are protected from dust and bright light. And in terms of fire safety, mobile cabinets are generally safer than static cabinets.



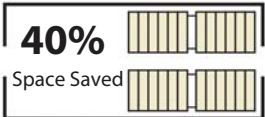
Specially designed and well-constructed strong steel track for durability and smooth operation



Quiet and effortless movement with numerous type of handle choices



Standard Shelving System



**40%**

Space Saved

**EXMET** Mobile System

## STEEL LOCKERS / PRIVATE (PERSONAL) CABINETS

خزائن معدنية للاستعمالات الشخصية



### More durable, safe and adaptable

Made of stainless steel or galvanized coated steel to any color, **EXMET** lockers are most suitable for accommodations, shopping complexes, public swimming pools, recreational clubs, resorts, school, universities, etc. They come with a selection of vibrant colors, ease of mobility, spacious, well ventilated and lockable by means of a key-lock, latch lock for pad-locking, configuration number or digital lock if needed.

**EXMET** Locker System



Multi Compartments Locker



4 Compartments Locker



2 Compartments Locker



1 Door Locker

# AGRICULTURAL RACKING SYSTEM



## More efficient and fast growing

Hydroponics is a type of horticulture/agriculture where plants growing without soil, using plastic containers/ long pot tubes. These tubes are carried by suitable shelving system to ensure proper water flow and easy cultivation.

EXMET provides the suitable shelves as per your needs.



## ADVANTAGES

- Extendable System
- Better Space Allocation
- Easy Assemble - Disassemble
- Strong Structure
- Movable Production Shelves

## OTHER TYPES



DECORATIVE



SHOES DISPLAY



## OTHER TYPES

### CANTILEVER STORAGE

#### ADVANTAGES

- Easy to install and assemble.
- Capable of storing various load types: pallets, timber, tubes and pipes.
- Removable arms to allow storage of various shapes and sizes.



Cantilever racking is your storage solution if you want to store large, bulky items. It provides easy storage for materials with various lengths and sizes.

### TIRE STORAGE AND DISPLAY



**BUREAU VERITAS**  
Certification



## **EXPANDED METAL MANUFACTURING COMPANY LIMITED**

Head Office: Street J, New Industrial Area,  
P. O. Box: 17840, Doha

### **STATE OF QATAR**

*Bureau Veritas Certification Holding SAS – UK Branch certifies that the Management System of the above organisation has been audited and found to be in accordance with the requirements of the management system standards detailed below*

#### **ISO 9001:2015**

Scope of certification

**MANUFACTURING, MARKETING AND SUPPLY OF PLASTERING AND BLOCK ACCESSORIES, GYPSUM ACCESSORIES FOR DRY WALL PARTITION AND CEILING SYSTEM, CLADDING FIXING SYSTEM, CABLE TRAY AND CABLE TRUNKING FOR BUILDING CONSTRUCTION MATERIALS. FABRICATION, MARKETING AND SUPPLY OF SHELVING AND RACKING SYSTEM.**

Original cycle start date:	<b>06<sup>th</sup> June 2011</b>
Expiry date of previous cycle:	<b>05<sup>th</sup> June 2020</b>
Re-Certification audit date:	<b>07<sup>th</sup> May 2020</b>
Re-Certification cycle start date:	<b>06<sup>th</sup> June 2020</b>

Subject to the continued satisfactory operation of the organisation's Management System, this certificate expires on: **05<sup>th</sup> June 2023.**

Certificate No. **IND.20.2504/QM/U**

Version: No. 1 Revision date: 06<sup>th</sup> June 2020

**Vinoth. K. P - Certification Manager**

Certification body address: **5<sup>th</sup> Floor, 66 Prescott Street, London E1 8HG, United Kingdom**

Local office: **G1-G3, Ground Floor, KG Building  
(Bldg. No. 194, Street No. 230), C Ring Road,  
Opposite Gulf Times, P. O. Box: 22157,  
(Doha) Qatar**



Further clarifications regarding the scope of this certificate and the applicability of the management system requirements may be obtained by consulting the organisation.  
To check this certificate validity please call: **+974 40329729**







## Contact us:

New Industrial Area, Doha, Qatar



[qatarsales@exmetco.com](mailto:qatarsales@exmetco.com)



Qatar: 4460 3826

Oman: 2443 7746 Kuwait: 2571 1363



[www.exmetco.com](http://www.exmetco.com)



Exmet

WhatsApp business account

